



Excellence in
engineering

striving for
excellence



Adil Mansoor - CEO

Our vision is to accelerate progress and growth of the company by introducing latest technology. Engineering sector being the backbone of our developing economy, we are committed to play a role of industry leader in innovative solutions.

At Excel, we achieve industry milestones with the integrated efforts of our qualified and committed staff/engineers.

Adil Mansoor





Excel Group offers state-of-the-art and innovative solutions in engineering, printing, IT, logistics and construction industry. Excel Group of Companies have earned a distinctive name by continuously raising the industry bar on innovative and quality products & services.

The journey started in 1981 as Adil Enterprises Limited, a company manufacturing tractor parts. Mr. Adil Mansoor's vision, drive and leadership has propelled the business to the present industrial conglomerate known as Excel Group serving a large customer base.

The family of Excel Group includes the following companies.

- Excel Engineering (Pvt.) Ltd.
- Hussain Engineering Works (Pvt.) Ltd.
- Excel Cards (Pvt.) Ltd.
- Excel Constructions (Pvt.) Ltd.

choose **quality**
choose **excel**

Pakistan



Unit 1  lahore

Unit 2  karachi



excelengineering

Unit 1 lahore

Based in Sheikhpura Lahore, a fully equipped company with state-of-the-art engineering tools, Excel Engineering Company produces high-standard automotive and engineering components including, Casting, Forging, Machining, Pressing, Fabrication, Welding & Heat treatment facilities. The ISO 9001-certified company with a total strength of 600 employees stands as one of the leading engineering facilities in Pakistan manufacturing automotive parts & providing exceptional technology services to both national & worldwide clientele.



Unit 2 karachi

Hussain Engineering Works (Pvt) Ltd is the largest manufacturer of automobile components in the private sector of Pakistan. It was established in 1979 as a machined casting manufacturer and has since been operating as an OEM for top automotive assemblers. With its efficient furnaces, updated CNC machining lines, and latest equipment, HEWL (Pvt.) Ltd. is one of the leading manufacturers of automotive components. They produce high-tech mechanical castings with precision by consistently investing in innovative technology. HEWL (Pvt.) Ltd. is now capable of undertaking the production of complex engineering parts. Its product line includes Ventilated Brake Discs, Brake Drums, Wheel Hubs, Pulleys, Fly Wheels, Exhaust Manifolds, and Transmission Cases along with sheet metal and fabricated parts.



Foundry



moldinglines

Our foundry shops have engineered molding lines, including mechanized sand system, conveyors for handling molds, knockouts for separating castings from molds. Green sand molding is done on pneumatically operated high-pressure pin lift and turnover molding machines. Plant for washing sand before molding is in place to ensure premium quality. Apart from green sand molding; Co2 resin sand is also used for moulding of complicated castings.

coremakingshops

We manufacture a range of complex castings and produce cores using diverse methods as per specific molding requirements. Core shooter and specially designed pneumatic fixtures are used to construct and place variety of cores into their respective molds. Different materials like silicate, fusion resin and molasses are utilized in our core making shops.



melting

There is a range of both Induction and Cupola furnaces installed at the foundries. The capacity of induction furnaces is 1,500 kg, 700 kg, 500 kg and 250 kg per hour. Extreme care is taken during this key process of casting so that a precise blend of ingredients are used to match the required grade of Cast Iron, Ductile Iron and other alloys.

Excel Engineering and Hussain Engineering have an installed casting capacity of 20,000 tons & 15,000 tons per annum respectively.

fettling

After shake out, castings freed from sand are brought into fettling shops. Our fettling shops, have a number of shot blasting machines (both hangar and rotary) that assist in preparing parts for the next stage. For some auto parts, cores are removed using pneumatically operated chisel and grinding machines. After cleaning, paintwork is carried out as per OEM requirement, using baked paint or oxide spray paint.



Machining



Almost all the castings produced by the foundry shop are machined in-house as per the specifications / drawings provided by the OEMs clients. Independent Machining lines have been established for mass production of individual parts. Our Machining lines include conventional machines, NC and CNC machines along with SPMs to ensure high level of precision in the components manufactured. Internationally approved quality machine tools are being used to ensure that components are manufactured according to the specified standards.



Our machining lines include the CNC vertical lathes CNC horizontal lathes, CNC Machining centers, CNC drilling and tapping centers, Imported and self-developed special purpose machines, milling machines, radial drills and a variety of other conventional machines. Jigs and fixtures at each stage are developed with extreme care guaranteeing that each part produced comply with the OEMs required level of machining precision.



sheetmetal, forging, fabrication and heattreatment

Apart from machined castings we also produce sheet metal, forged and fabricated parts. This engineering facility includes pneumatic and mechanical presses, hammers, shearing machines, induction-heating, temperature controlled furnaces, normalizing and salt bath units, Co2 welding, Flash and Butt welding.



development

Development of new parts in this ever-changing engineering environment is our key area of strength. Our experienced and well qualified team of engineers are ever ready and eager to undertake all the challenges they may face in this process. Technical data sheets and drawings are thoroughly studied by our designers before creating the in-house illustration for producing patterns, molds, machine fixtures, and quality control gauges. Additionally **SPM** are also being developed during the process. While developing a part complete **S.O.Ps** are developed to ensure no area including casting, machining, inspection and quality assurance is left out.



qualitycontrol

We believe in Engineering Excellence and that is only possible with stringent quality control throughout the production process. Our quality control department works independently certifying the quality at each stage. From procurement of raw materials, to casting process including molding, melting etc. Our team of trained inspectors is present to make sure the quality of the sand used for molding is accurate, the sand permeability is impeccable and mold hardness is of the required standard at our **SAND TEST LABORATORY**.

At the stage of melting, quality is ensured using **CARBON EQUIVALENT METER, CHEMICAL LABORATORY and SPECTRO METER**.



Pouring Temperature is gauged through **THERMOCOUPLES**. Samples from each heat are also taken for testing on **UTS** machines to record the tensile strength. Another sample is taken from metallographic structure to be checked on our **MICROSCOPES**.

Similar quality checks are carried out at each stage of machining and also before the final delivery to our customer. Apart from specially designed inspection gauges and fixtures, digital universal gauges and **CMM** is also used to guarantee the precision of machining sizes.

We always operate in a **5S** environment and maintain **ISO** operations/ management and quality standards at all stages.



Products



DRUM REAR BRAKE
(SUZUKI)



DRUM REAR BRAKE
(SUZUKI)



FLYWHEEL COMP
(SUZUKI)



ROTOR FRONT BRAKE
(SUZUKI)



ROTOR FRONT BRAKE
(SUZUKI)



DRUM REAR BRAKE
(SUZUKI)



ROTOR FRONT BRAKE
(SUZUKI)



PULLEY CRANKSHAFT
(SUZUKI)



FLYWHEEL COMP
(SUZUKI)



EXHAUST MANIFOLD
(SUZUKI)



FLYWHEEL COMP
(SUZUKI)



FLYWHEEL COMP
(SUZUKI)



DRUM FRONT BRAKE
(SUZUKI)



DRUM REAR BRAKE
(CHANGAN)



BRACKET S/A GENERATOR
(HINO)



FLYWHEEL COMP
(SUZUKI)



DRUM REAR BRAKE
(SUZUKI)



WHEEL HUB REAR
(MITSUBISHI FUSO)



DRUM REAR BRAKE
(CHANGAN)



WHEEL HUB FRONT
(ISUZU)



BRACKET INJ. PUMP
(HINO)



SHACKLE RR ASSEMBLY
(MITSUBISHI FUSO)



HOUSING FLYWHEEL
(HINO)



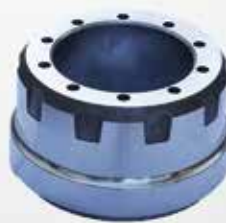
BRAKE DRUM FRONT
(MITSUBISHI FUSO)



DRUM REAR AXLE DRIVE
(VOLVO)



WHEEL HUB REAR
(ISUZU)



BRAKE DRUM REAR
(ISUZU)



BRAKE DRUM REAR
(HINO)



TRANSMISSION CASE
MF 240/375



CENTER HOUSING
MF 240/375



AXLE CASING
FIAT 480/640



GEAR BOX
FIAT 480/640



TUBE FINAL DRIVE
FIAT 480



TUBE FINAL DRIVE
FIAT DB 60/56



TUBE FINAL DRIVE
FIAT DB 70-56 SG



AXLE HOUSING
MF 385/375/260



FLY WHEEL
MF 240/260



FLY WHEEL
GENSET



FLY WHEEL
GENSET (PERKINS)



FLY WHEEL
FIAT 480/640



SIDE COVER FINAL DRIVE
FIAT 480



SIDE COVER FINAL DRIVE
FIAT 640 DB 70/50



PRESSURE PLATE
FIAT 480/640



DUAL CLUTCH
MF 240/375



EXHAUST MANIFOLD
FIAT 640/640S



EXHAUST MANIFOLD
MF 260



ENGINE BRACKET
FIAT 480/640



COVER REAR AXLE DRIVE MF 385/375



RIM WEIGHT
LOWER DABANG



FOOT REST RH
MF 240



FRONT FRAME
MF 240



WATER BODY
MF 385



SPACER MATCHING
FIAT



FRONT END WEIGHT
MF 240/375



ELBOW VERTICAL EXHAUST FIAT 640



FRONT AXLE SUPPORT
FIAT



ADOPTER
MF 260



CARRIER CLUTCH
MF



LOWER LINK
FIAT 480/640



Head Office: 131/4 Quaid-e-Azam
Industrial Estate, Kot Lakhpat,
Lahore 54770, Pakistan.
www.excelgroup.com.pk



Excel Engineering (Pvt) Ltd.
Lahore 39350, Pakistan.
www.excelengg.com



Hussain Engineering Works Pvt. Ltd.
Karachi 75800, Pakistan.
www.husseinengineering.com.pk



CORPORATE
PROFILE VIDEO

Tel: (+92-42) 35155667-8 | Fax: (92-42) 35140244 | Email: exports@excelengg.com